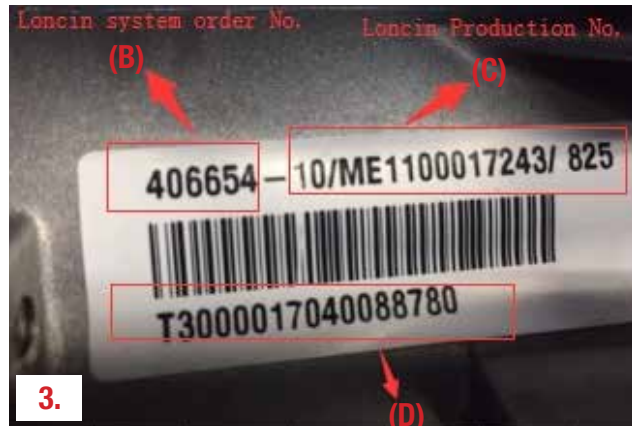


## LONCIN ENGINE NUMBER CODES - HOW TO FIND PARTS

There are various numbers and labels on a Loncin engine – what do they mean and which is the key number for finding parts?



- 1. How Do I Find a Loncin Engine Model Number? What am I looking for?** The Engine Model Number is scribed into the side of the alloy engine block. In the example “G160F” (A) in large font is the model number and that is what you need to look up parts.



- 3. What do the numbers on the barcoded label on each engine mean?** These numbers relate more to Loncin’s production system. From top row, left to right;  
**(B)** Loncin System Order Number  
**(C)** Loncin Production Number  
 And below the barcode:  
**(D)** Engine Specification BOM number (this is also scribed into the block below the model number in)  
*NOTE: Not required in day to day parts ordering*



- 2.**  
**2.** Go to [gaspares.com.au](http://gaspares.com.au)  
 Click on [Parts Catalogue](#) >  
[IPL's and Manuals](#) > [Loncin](#)  
[Select your Engine](#)



- 4.**  
**4.** What do the numbers on the black label on the side of the engine cover mean?  
**(E)** This label relates to the engine’s emission certification.  
*NOTE: Not required in day to day parts ordering*